

BLACKHAWK XP42A ENGINE+ UPGRADE

FOR THE CESSNA CARAVAN SERIES



Multiply your power and your revenue generation capability with the Blackhawk XP42A ENGINE+ UPGRADE.

Blackhawk makes it easy, with a quick, ultra-cost-effective installation that delivers value, performance, and enough power to impress any pilot.

Replace your tired 600/675 horsepower PT6A-114/114A engine with a brand-new PT6A-42A powerplant for like-new levels of performance and load carrying capabilities.

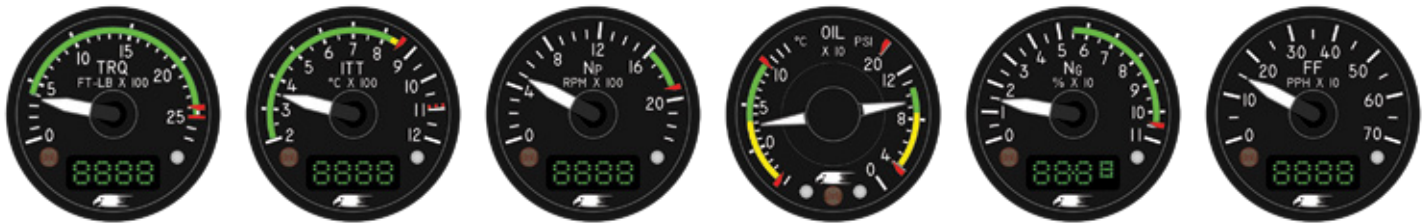


XP42A ENGINE+ UPGRADE Performance Comparison

No Wind, Paved Runway, No Pod

Take-Off Distance, feet, MTOW	Stock Caravan 208		Caravan 208 with XP42A ENGINE+ UPGRADE		Stock Grand Caravan 208B		Grand Caravan 208B with XP42A ENGINE+ UPGRADE	
	Ground Roll	Over 50' Obstacle	Ground Roll	Over 50' Obstacle	Ground Roll	Over 50' Obstacle	Ground Roll	Over 50' Obstacle
Sea Level, ISA	1,160	2,055	930 (-20%)	1,680 (-18%)	1,365	2,420	1,035 (-24%)	1,835 (-24%)
Sea Level, ISA+20°	1,295	2,278	1,050 (-19%)	1,765 (-23%)	1,533	2,703	1,185 (-23%)	2,030 (-25%)
4,000 ft. elevation, ISA	1,430	2,500	1,130 (-21%)	2,030 (-19%)	1,710	3,000	1,245 (-27%)	2,115 (-30%)
4,000 ft. elevation, ISA+20°	1,620	2,810	1,325 (-18%)	2,330 (-17%)	1,930	2,810	1,325 (-31%)	2,330 (-17%)
Climb Performance, fpm	ISA	ISA+20°	ISA	ISA+20°	ISA	ISA+20°	ISA	ISA+20°
4,000 ft. altitude	1,150	980	1,550 (+35%)	1,180 (+20%)	900	675	1,228 (+36%)	960 (+42%)
8,000 ft. altitude	1,090	795	1,270 (+17%)	1,025 (+29%)	840	575	1,054 (+25%)	804 (+40%)
Cruise Performance, ktas	ISA	ISA+20°	ISA	ISA+20°	ISA	ISA+20°	ISA	ISA+20°
12,000 ft. altitude	178	164	187 (+5%)	184 (+12%)	173	156	189 (+9%)	186 (+19%)h

HAWKEYE DigiLog Smart Gauges for the XP42A ENGINE+ UPGRADE



XP42A ENGINE+ UPGRADE Package Includes

- + Factory-New Pratt & Whitney Canada PT6A-42A Engine
- + Pratt & Whitney Canada Enhanced New-Engine Warranty
- + Factory-New Hartzell Wide-Chord 100" Diameter Four-Blade or 104" Diameter Three-Blade Propeller*
- + New Carbon-Fiber Composite Cowling & High Efficiency Inlet
- + New Hawkeye DigiLog Smart Engine Instruments
- + New 40% Larger Oil Cooler
- + STC Paperwork
- + Globally Approved Flight Manual Supplement
- + Instructions for Continued Airworthiness
- + Pratt & Whitney Canada Engine Logbook
- + Blackhawk Logbook Case
- + Blackhawk Cycle Book
- + Blackhawk Lifetime Customer Support Guarantee

* Optional 98" 4-Blade or 96" 5-Blade MT Composite Propellers Available

