

# BLACKHAWK XP52 ENGINE+ UPGRADE

## FOR THE KING AIR 200 SERIES



Now you can enjoy both a big cabin and impressive cruise speeds. The Blackhawk XP52 ENGINE+ UPGRADE exchanges the original PT6A-41/42 engines with Pratt & Whitney Canada's newer generation PT6A-52 engines. The more efficient design extends the maximum operating temperature to 820°C for more available torque and horsepower at higher altitudes. This horsepower allows for higher rates of climb, faster cruise speeds, and shorter times to destination.



## XP52 ENGINE+ UPGRADE Performance Comparison

FL280 - ISA Day - Max Cruise Power - Mid Cruise Weight

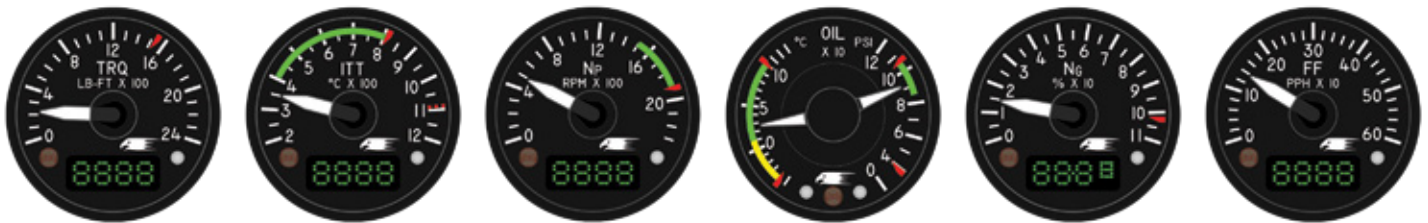


FL240 - ISA Day - Max Cruise Power - Mid Cruise Weight



	Stock King Air 200 (PT6A-41)	Stock King Air B200 (PT6A-42)	Blackhawk XP52 ENGINE+ UPGRADE (PT6A-52)
FL280 - ISA Day - Max Cruise Power - Mid Cruise Weight			
Torque (ft/lbs)	1,328	1,580	2,050
RPM	1,900	1,800	1,800
Fuel Flow (Total PPH)	532	562	721
KTAS	271	285	311+

### Optional HAWKEYE DigiLog Smart Gauges for the XP52 ENGINE+ UPGRADE



#### XP52 ENGINE+ UPGRADE Benefits Include

- + Performance
  - Reduced Time to Climb
  - Increased Cruise Speeds
  - Reduced Block Times
- + Safety
  - Increased Single Engine Service Ceiling
  - Improved High and Hot Takeoff Conditions
  - Climb to Higher Altitudes to Avoid Inclement Weather
  - Expanded Pilot Capabilities in an Emergency
- + Value/ROI
  - Lower Annual Operating Cost
  - Superior Resale Value
  - Worldwide Certification

#### XP52 ENGINE+ UPGRADE Package Includes

- + Two Factory-New Pratt & Whitney Canada PT6A-52 Engines (Exchange)
- + Pratt & Whitney Canada Enhanced New-Engine Warranty
- + STC Paperwork
- + Globally Approved Flight Manual Supplement
- + Instructions for Continued Airworthiness
- + Pratt & Whitney Canada Engine Logbook
- + Blackhawk Logbook Case
- + Blackhawk Cycle Book
- + Blackhawk Aircraft Decals
- + PT6A Entitlement Training from Flight Safety International
- + Blackhawk Lifetime Customer Support Guarantee

